

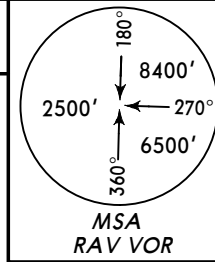
Airport Information

Details for RAS AL KHAIMAH INTL	
City	RAS AL KHAIMAH
State/Province	
Country	ARE
Latitude	N 25° 36' 48.00"
Longitude	E 55° 56' 20.00"
Elevation	102
Longest Runway	12300
Magnetic Variance	E 1.0°
Fuel Type	JET A-1 fuel is available
Oxygen	Oxygen facilities are unavailable.
Repair Facility	Repair facilities are unavailable
Landing Fee	There is a landing fee.
Jet Start Unit	A starting unit is not available at the airport.
Precision Approach	Availability is Unknown.
Beacon Light	A beacon light is not available.
Customs Facilities	Customs are available without restriction
Usage Type	Airport/Heliport is open to the public.
Time Zone Conversion	-4:00=UTC
Daylight Savings	Airport does not observe daylight savings time
Change Notices Available	1

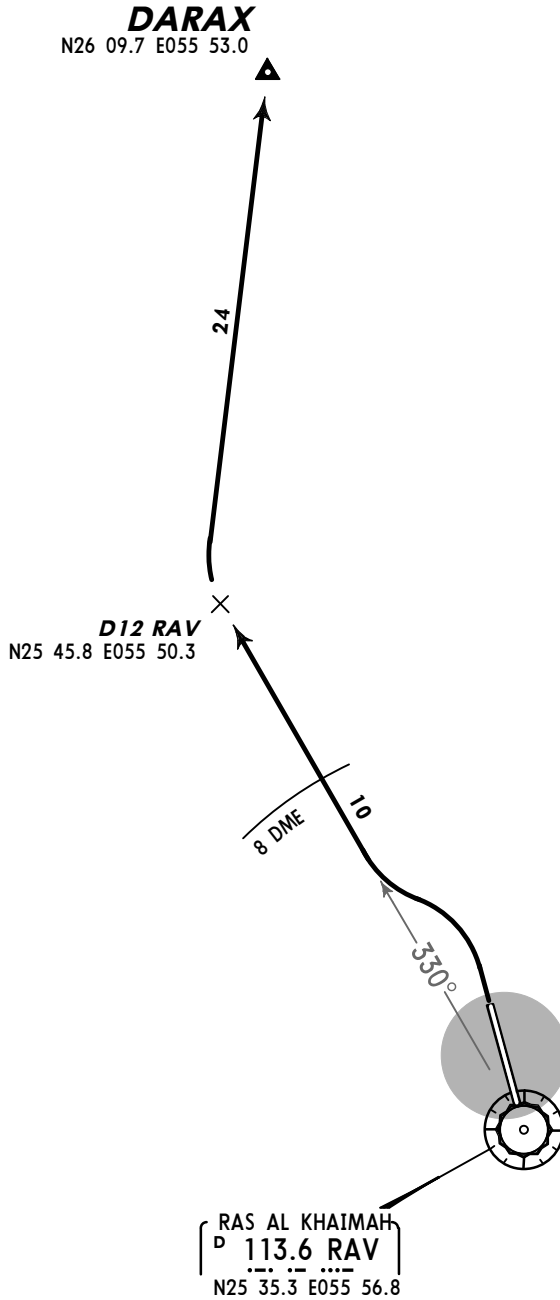
Terminal Chart Change Notices

Apt Elev
102'

Trans level: FL150 Trans alt: 13000'



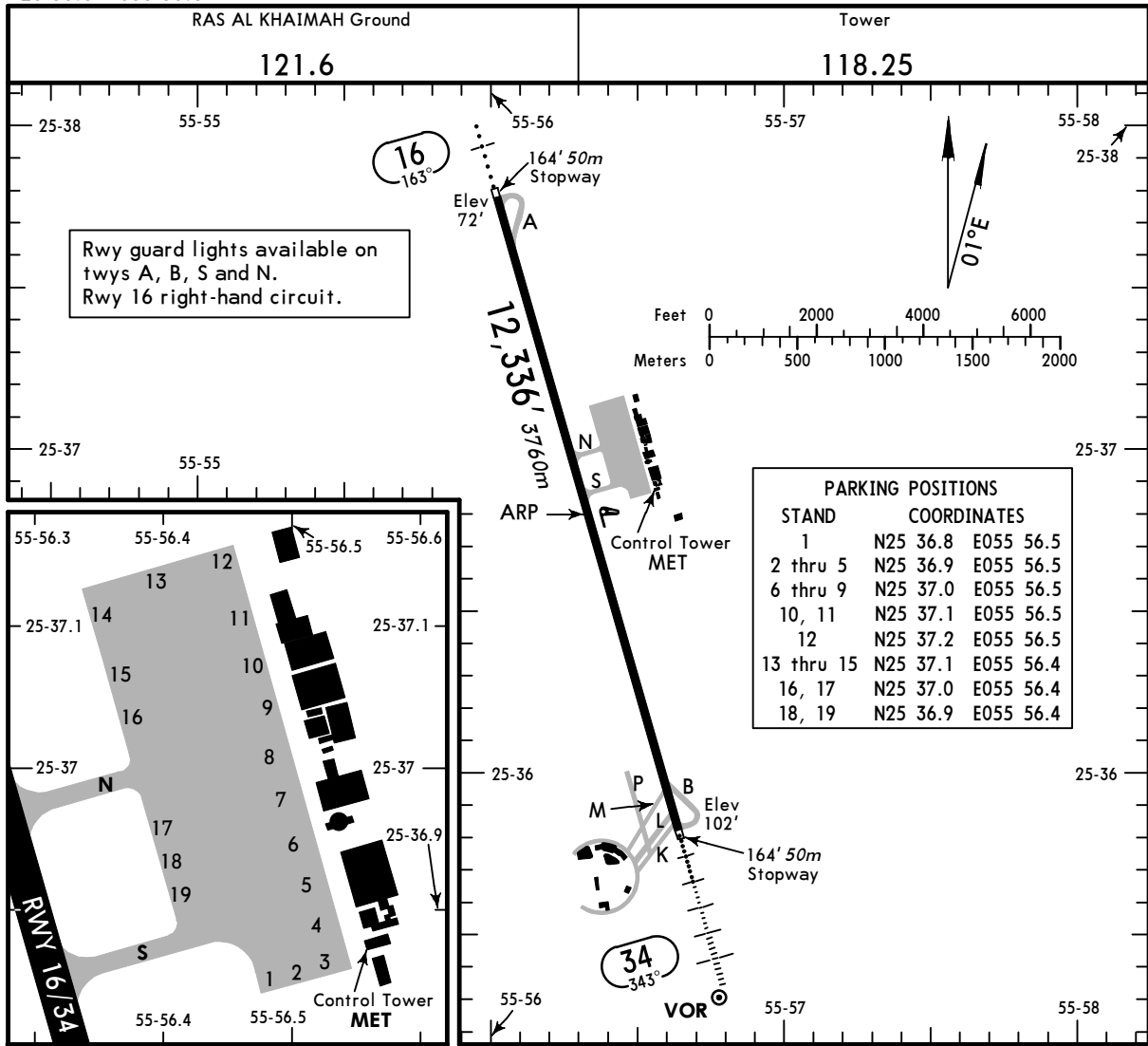
DARAX ONE [DARAX1] RWY 34 DEPARTURE



Climb to and maintain **6000'**

ROUTING

Turn LEFT, intercept RAV R-330 within RAV 8 DME to D12 RAV, turn RIGHT to DARAX.



ADDITIONAL RUNWAY INFORMATION

RWY	Landing Lights	USABLE LENGTHS		TAKE-OFF	WIDTH
		Threshold	Glide Slope		
16	HIRL (60m) ALS PAPI-L (angle 3.0°)				148'
34	HIRL (60m) HIALS PAPI-L (angle 3.0°)		11,182' 3408m		45m

JAR-OPS

TAKE-OFF 1

	All Rwys		
	LVP must be in force		
A	RCLM (DAY only) or RL	RCLM (DAY only) or RL	NIL (DAY only)
B	250m	400m	500m
C			
D	300m		

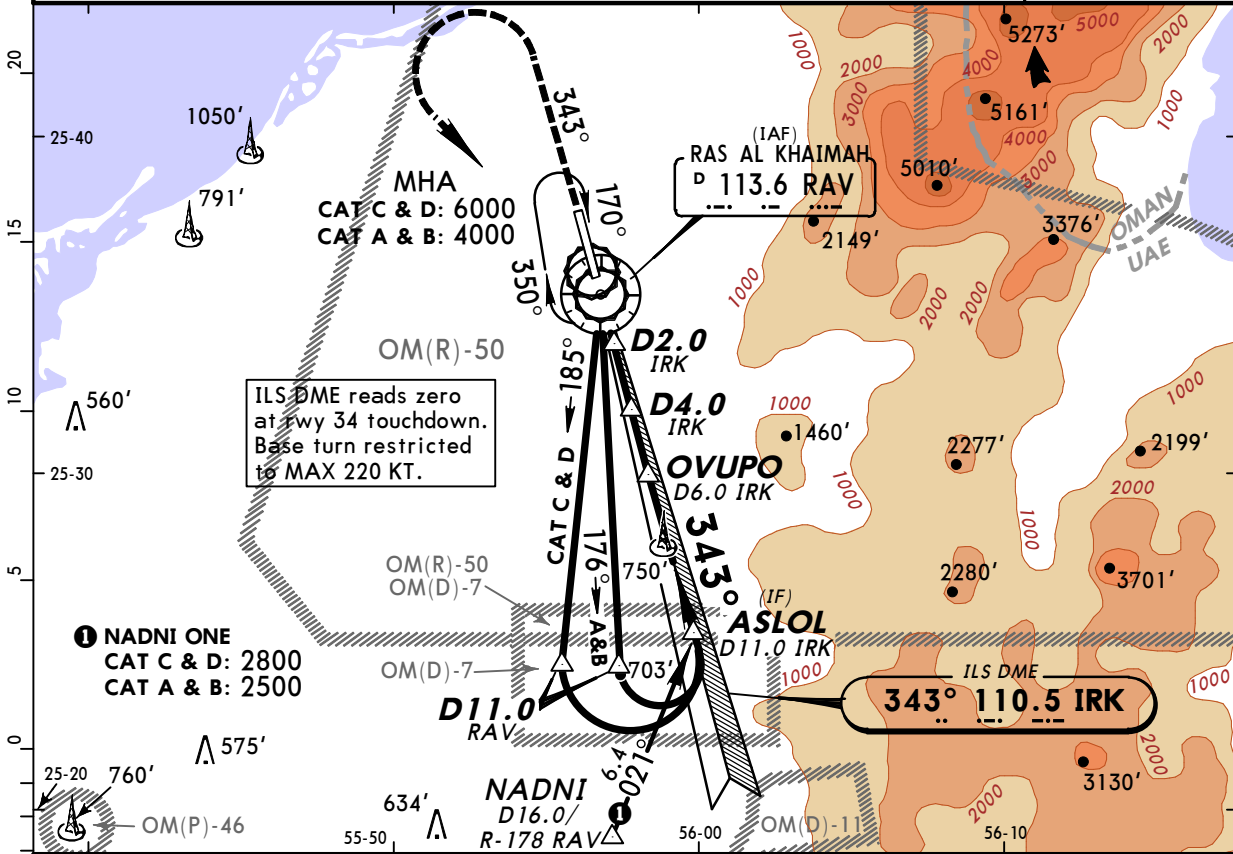
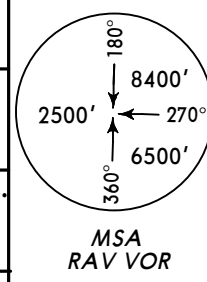
1 Operators applying U.S. Ops Specs: CL required below 300m.

OMRK/RKT
RAS AL KHAIMAH INTL

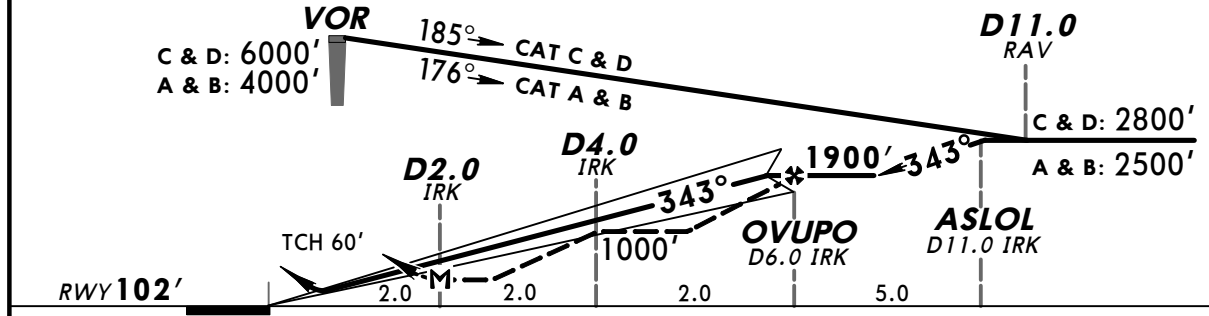
JEPPESSEN
 28 MAY 10 (11-1)

RAS AL KHAIMAH, UAE
VOR DME ILS Rwy 34

RAS AL KHAIMAH Approach		RAS AL KHAIMAH Tower		Ground	
124.0		118.25		121.6	
LOC IRK 110.5	Final Apch Crs 343°	GS No altitude published	ILS DA(H) 302' (200')	Apt Elev 102' RWY 102'	
MISSED APCH: Climb on R-343 RAV to CAT A & B: 4000', CAT C & D: 6000'. When passing CAT A & B: 2500', CAT C & D: 4500' turn LEFT to join holding at VOR.					
Alt Set: hPa		Rwy Elev: 4 hPa		Trans level: FL 150	
				Trans alt: 13000'	



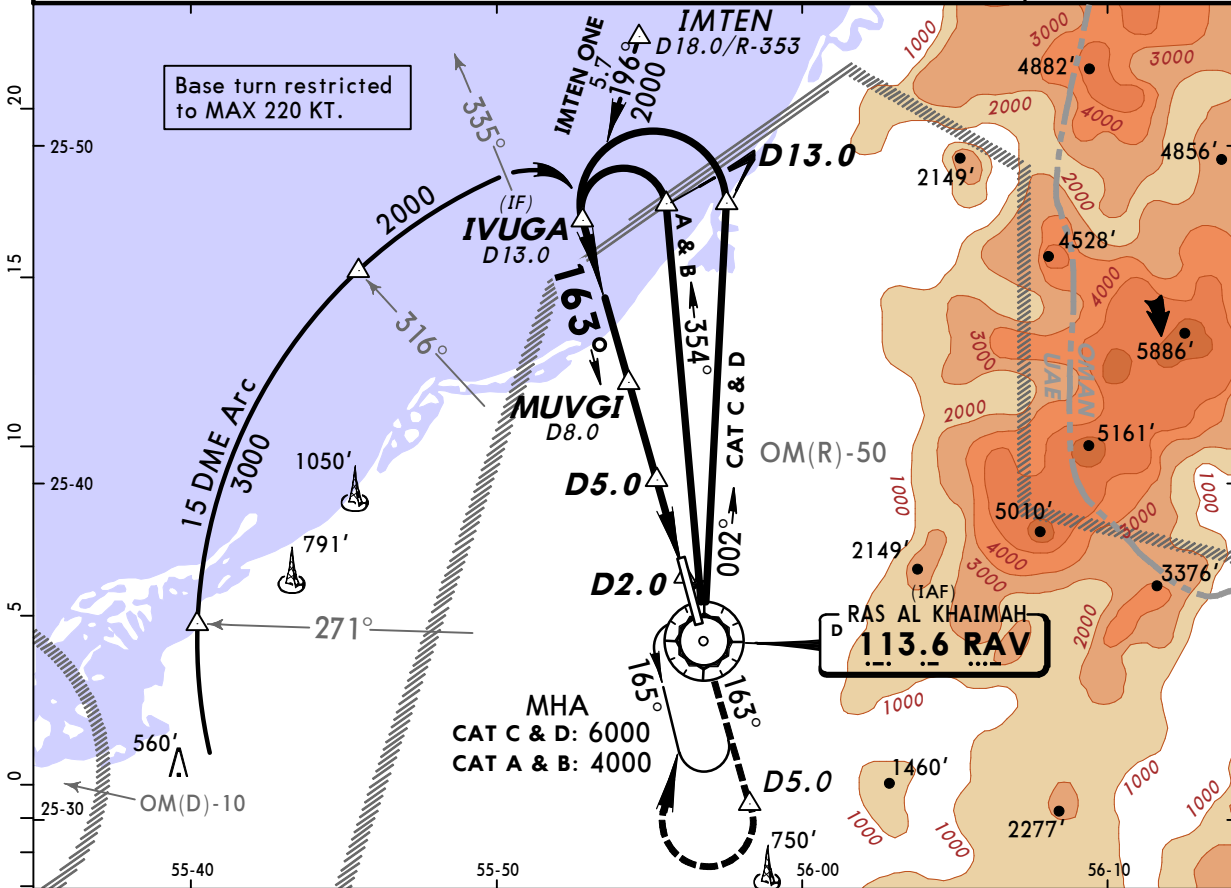
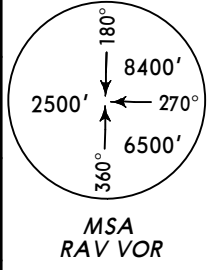
LOC (GS out)	IRK DME	1.0	2.0	3.0	4.0	5.0	6.0
	ALTITUDE	430'	740'	1060'	1380'	1700'	1900'



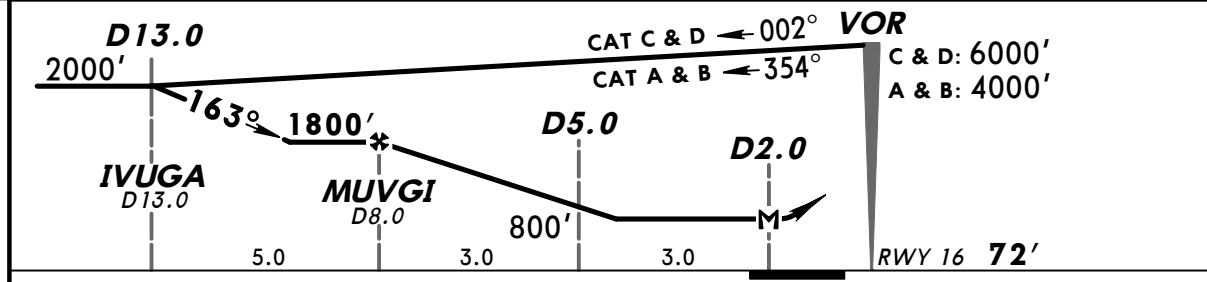
Gnd speed-Kts	70	90	100	120	140	160	HIALS PAPT Refer to Missed apch above
GS 3.00°	377	484	538	646	753	861	
MAP at D2.0 IRK							

JAR-OPS				STRAIGHT-IN LANDING RWY 34			
ILS DA(H) 302' (200')		LOC (GS out) MDA(H) 500' (398')					
FULL		ALS out		ALS out			
A			RVR 900m		RVR 1500m		
B			RVR 1000m		RVR 1800m		
C	RVR 550m	RVR 1000m					
D			RVR 1400m		RVR 2000m		

RAS AL KHAIMAH Approach		RAS AL KHAIMAH Tower		Ground
124.0		118.25		121.6
VOR RAV 113.6	Final Apch Crs 163°	Minimum Alt MUVGI 1800' (1728')	MDA(H) 480' (408')	Apt Elev 102' RWY 72'
MISSED APCH: Climb to CAT A & B: 4000', CAT C & D: 6000'. STRAIGHT AHEAD via VOR on R-163 to D5.0, then turn RIGHT to join holding at VOR.				
Alt Set: hPa	Rwy Elev: 3 hPa	Trans level: FL 150	Trans alt: 13000'	



RAV DME	8.0	7.0	6.0	5.0	4.0	3.0
ALTITUDE	1800'	1490'	1190'	870'	570'	260'



Gnd speed-Kts	70	90	100	120	140	160	ALS PAPI Refer to Missed apch above
Descent Angle	2.92°	362	465	517	620	723	
MAP at D2.0							

JAR-OPS STRAIGHT-IN LANDING RWY 16		
MDA(H) 480' (408')		
ALS out		
A	RVR 1300m	RVR 1500m
B	RVR 1400m	
C	RVR 1600m	RVR 1800m
D	RVR 1800m	RVR 2000m

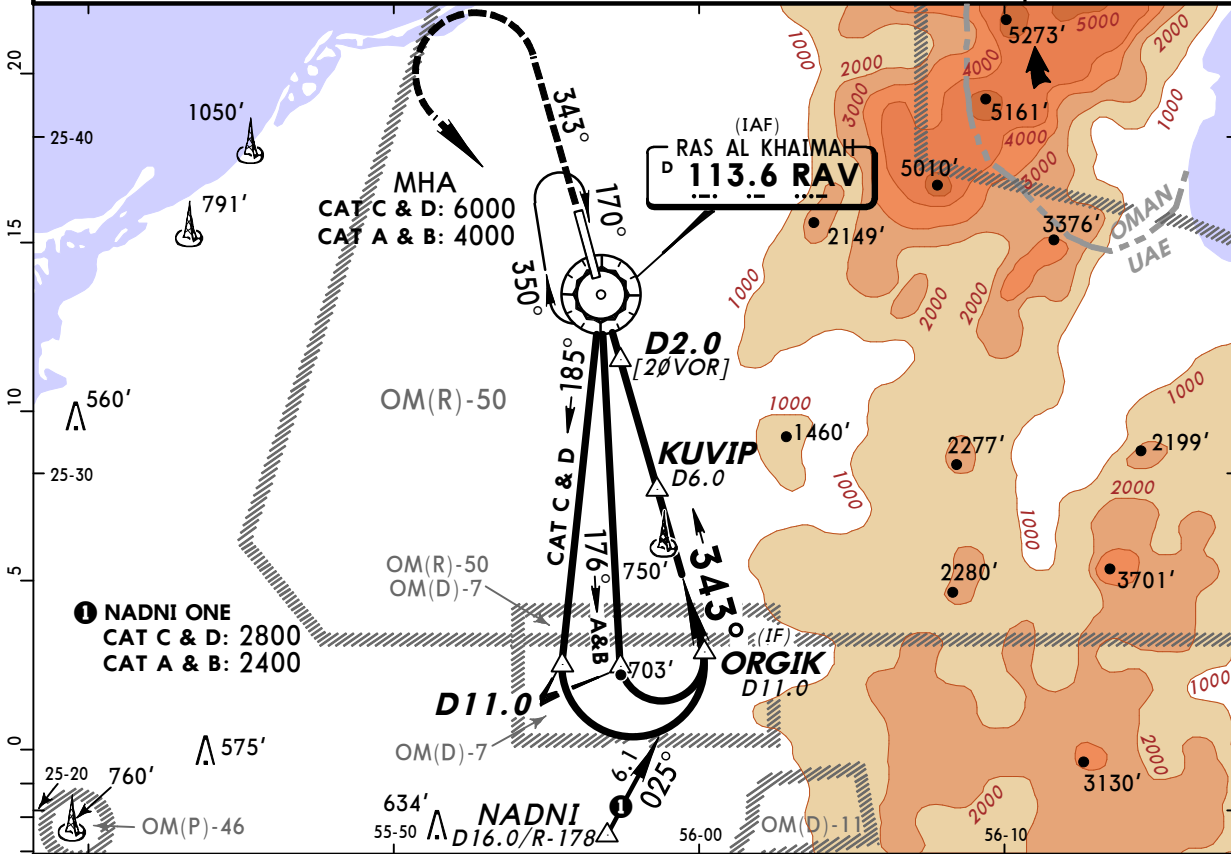
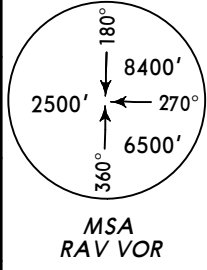
PANS OPS 3

OMRK/RKT
RAS AL KHAIMAH INTL

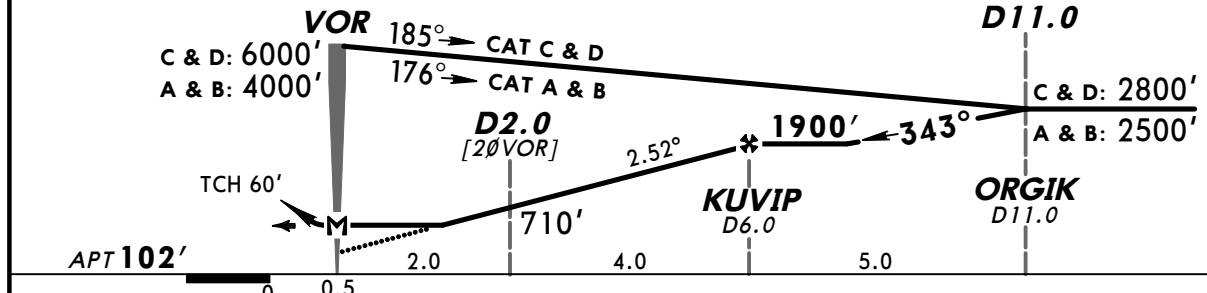
JEPPESSEN
 28 MAY 10 **(13-2)**

RAS AL KHAIMAH, UAE
VOR DME Rwy 34

RAS AL KHAIMAH Approach		RAS AL KHAIMAH Tower		Ground
124.0		118.25		121.6
VOR RAV 113.6	Final Apch Crs 343°	Minimum Alt KUVIP 1900' (1798')	MDA(H) 570' (468')	Apt Elev 102'
MISSED APCH: Climb on R-343 to <u>CAT A & B: 4000'</u> , <u>CAT C & D: 6000'</u> . When passing CAT A & B: 2500', CAT C & D: 4500' turn LEFT to join holding at VOR.				
Alt Set: hPa		Apt Elev: 4 hPa		Trans level: FL 150
Base turn restricted to MAX 220 KT.				Trans alt: 13000'



RAV DME	0.0	1.0	2.0	3.0	4.0	5.0
ALTITUDE	290'	560'	830'	1100'	1360'	1630'



Gnd speed-Kts	70	90	100	120	140	160
Descent Angle 2.52°	312	401	446	535	624	713
MAP at VOR						

JAR-OPS		STRAIGHT-IN LANDING RWY 34	
		MDA(H) 570' (468')	
		ALS out	
A	RVR 1000m	RVR 1500m	
B	RVR 1200m		
C		RVR 2000m	
D	RVR 1600m		

PANS OPS 3

CHANGES: Altimeter setting. Minimums. © JEPPESSEN, 2001, 2010. ALL RIGHTS RESERVED.